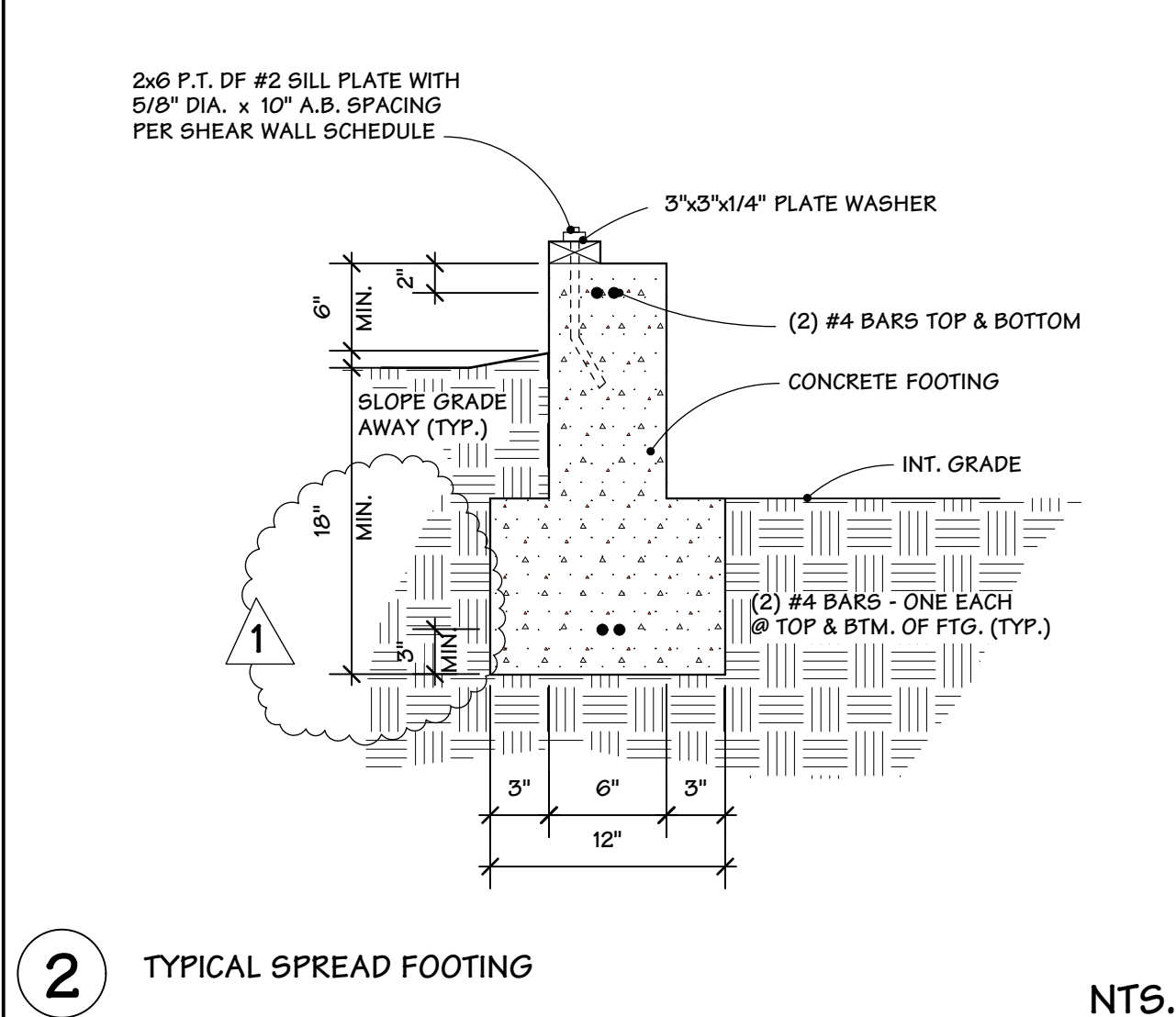
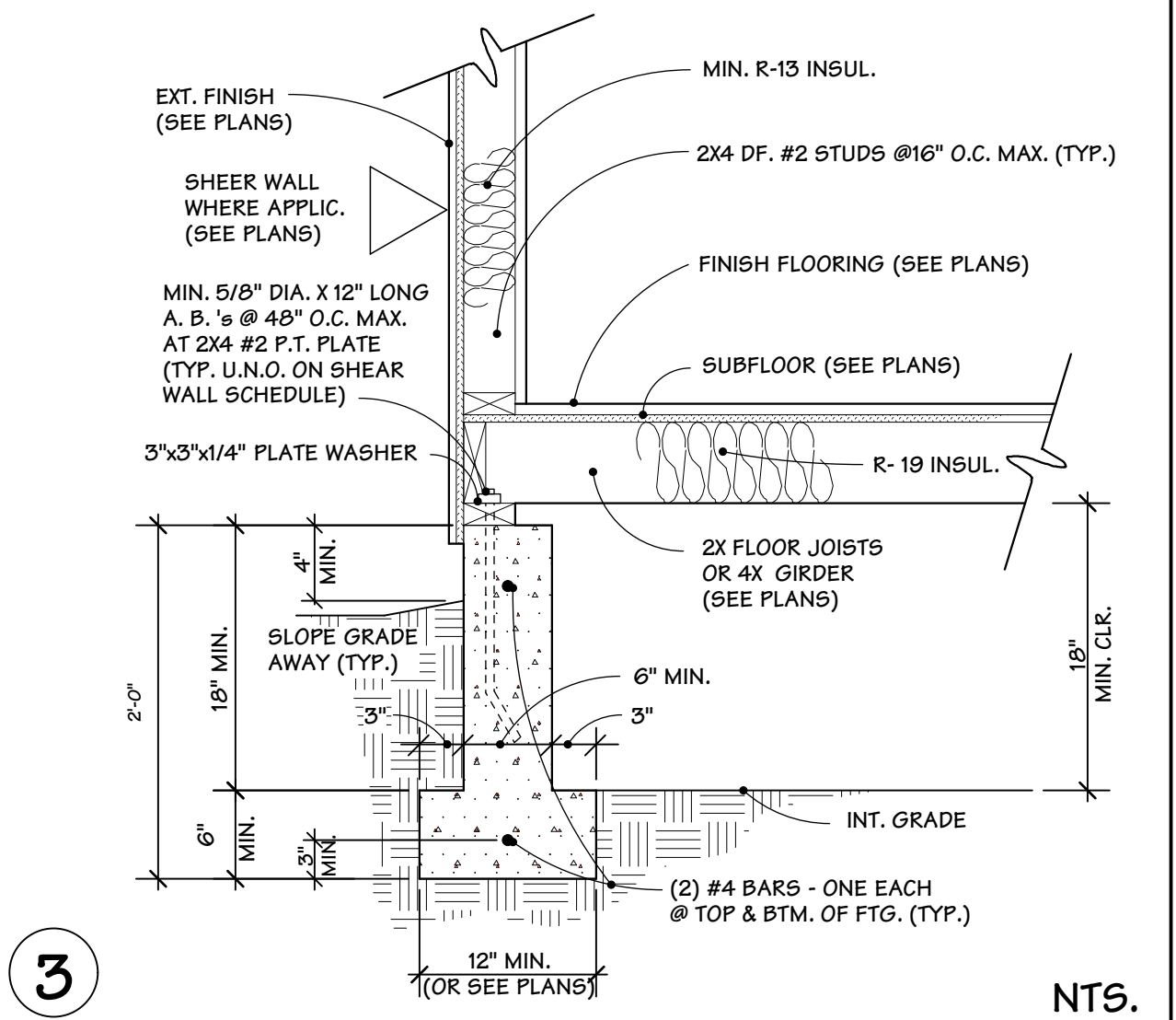


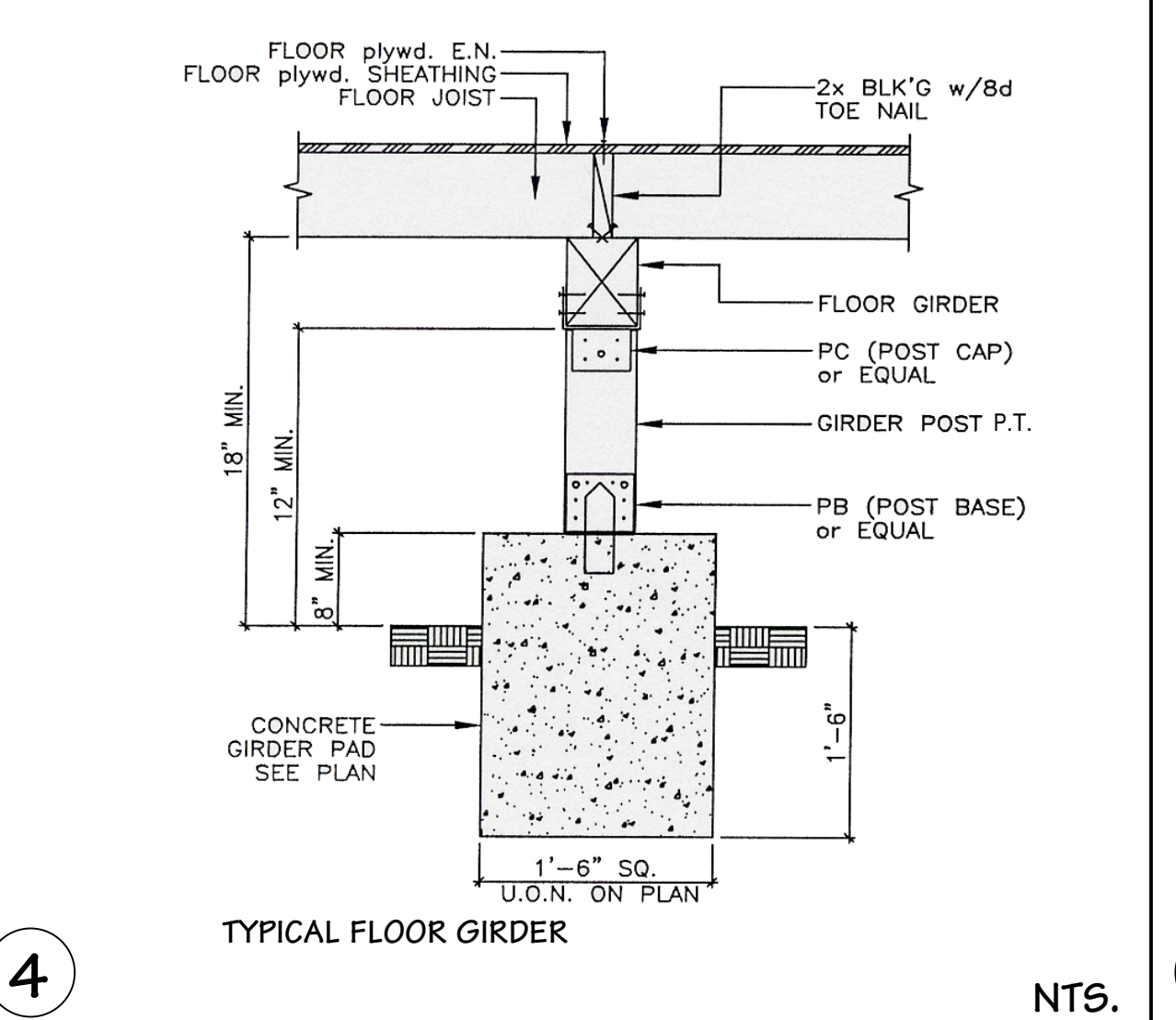
1 TYPICAL SLAB ON GRADE FTG. NTS.



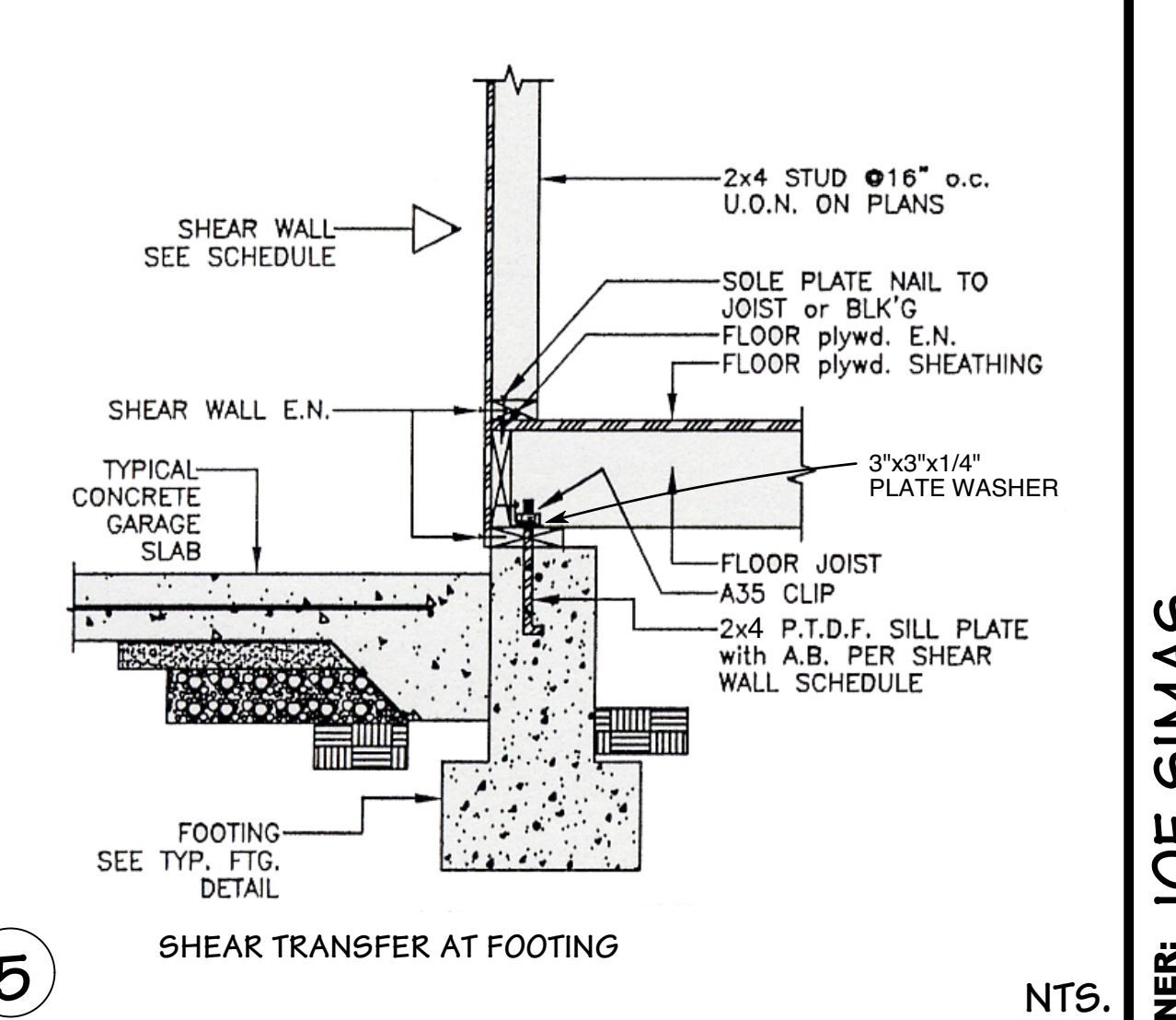
2 TYPICAL SPREAD FOOTING NTS.



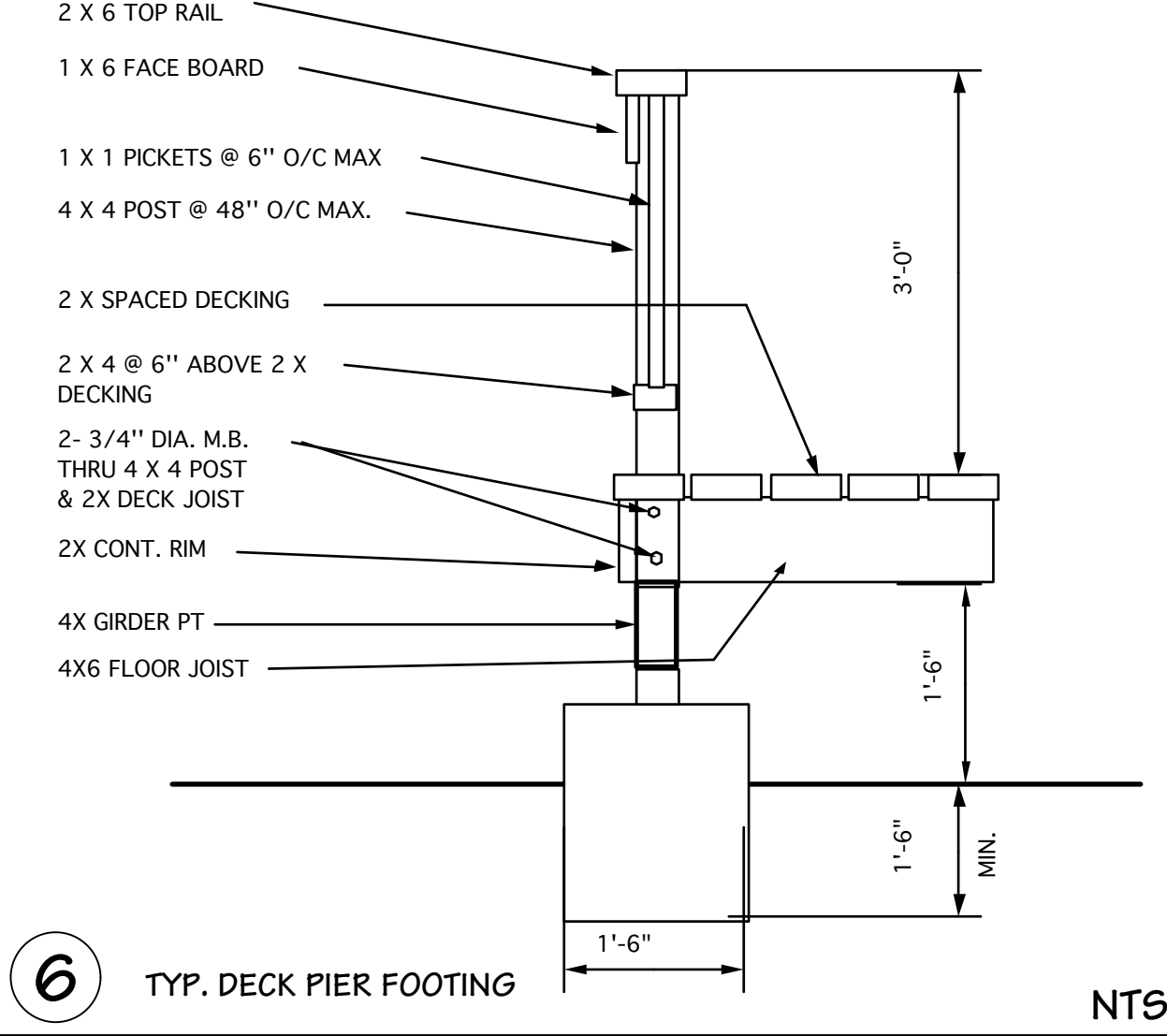
3 TYPICAL FLOOR GIRDER NTS.



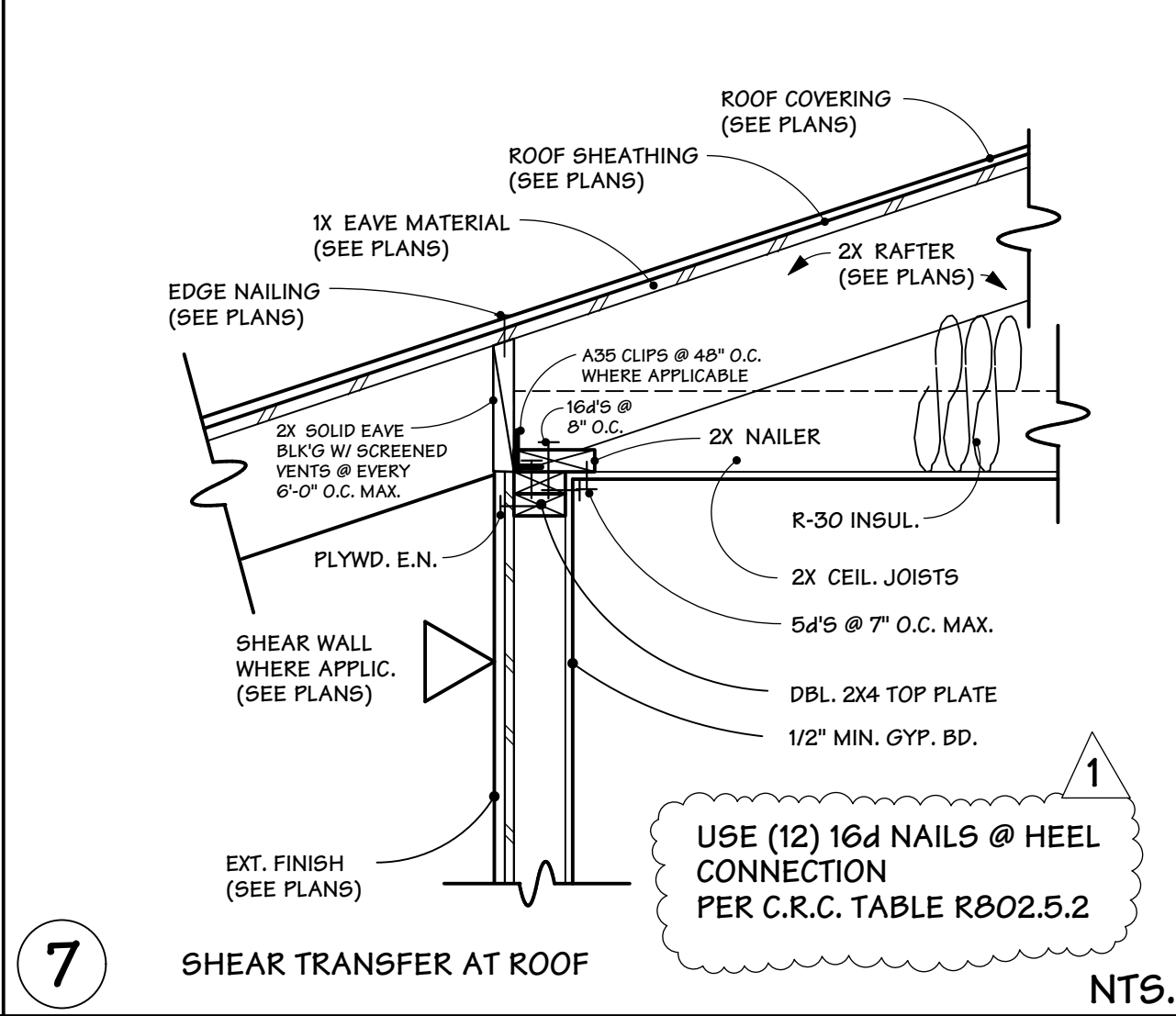
4 TYPICAL FLOOR GIRDER NTS.



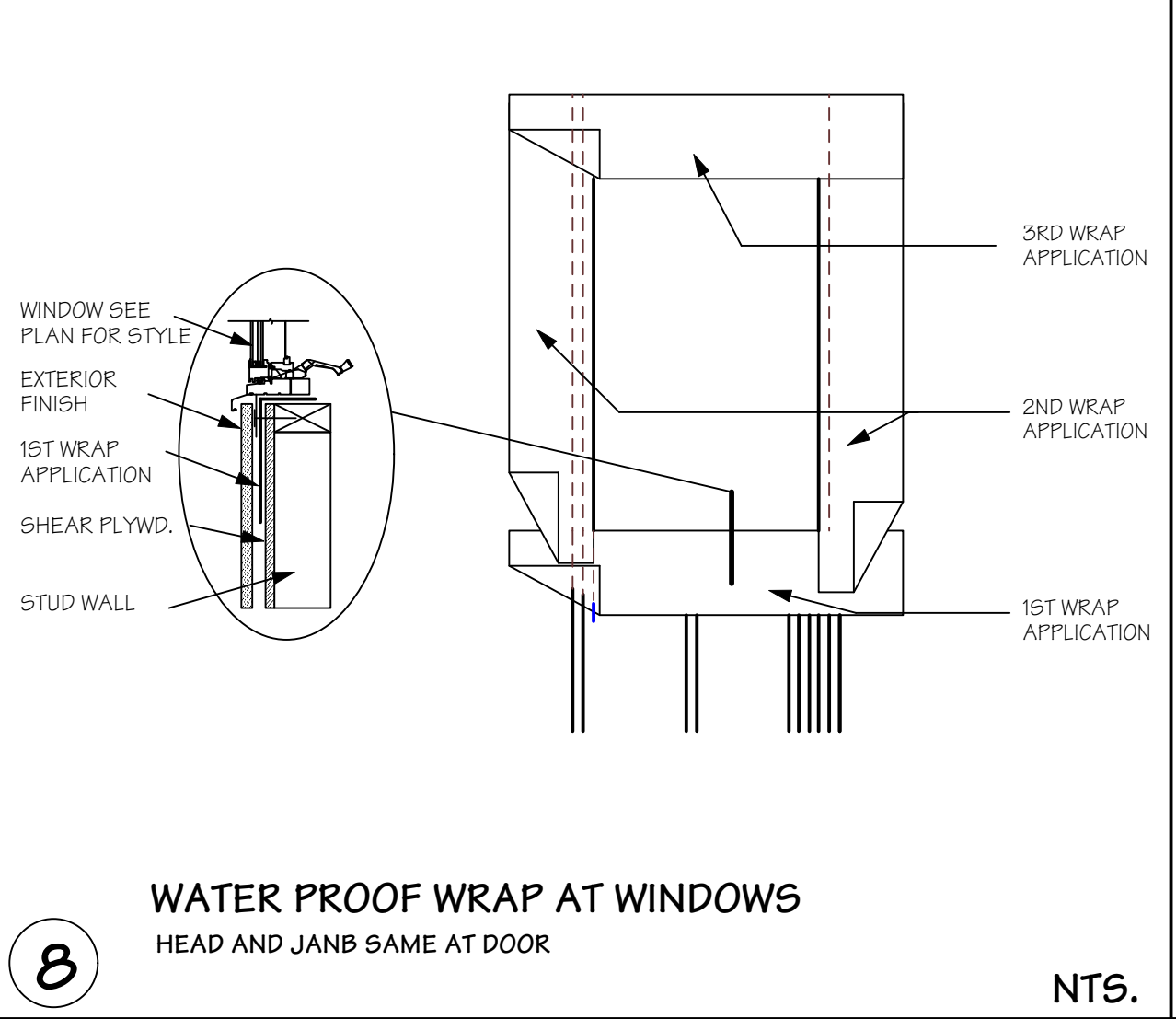
5 SHEAR TRANSFER AT FOOTING NTS.



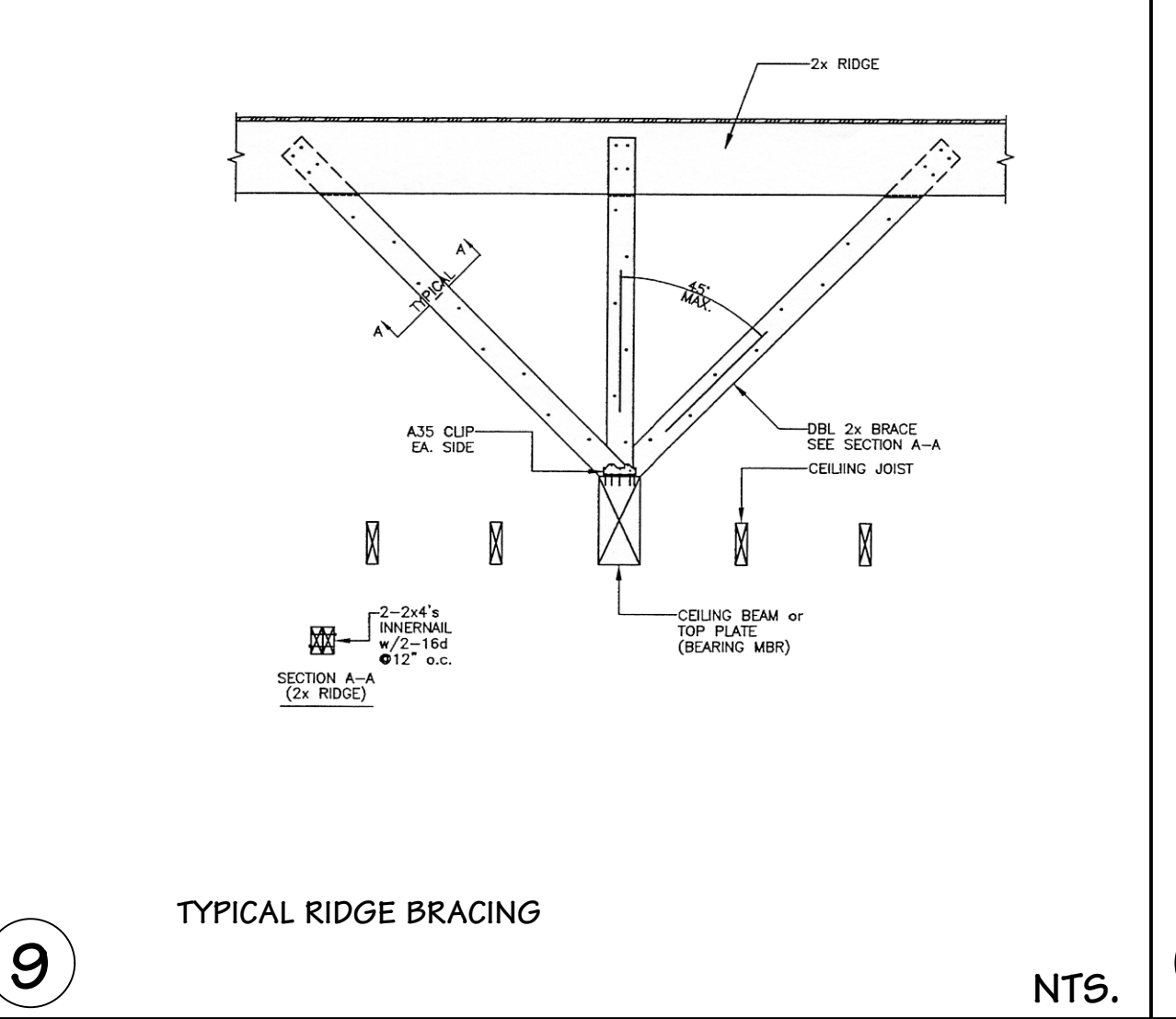
6 TYP. DECK PIER FOOTING NTS.



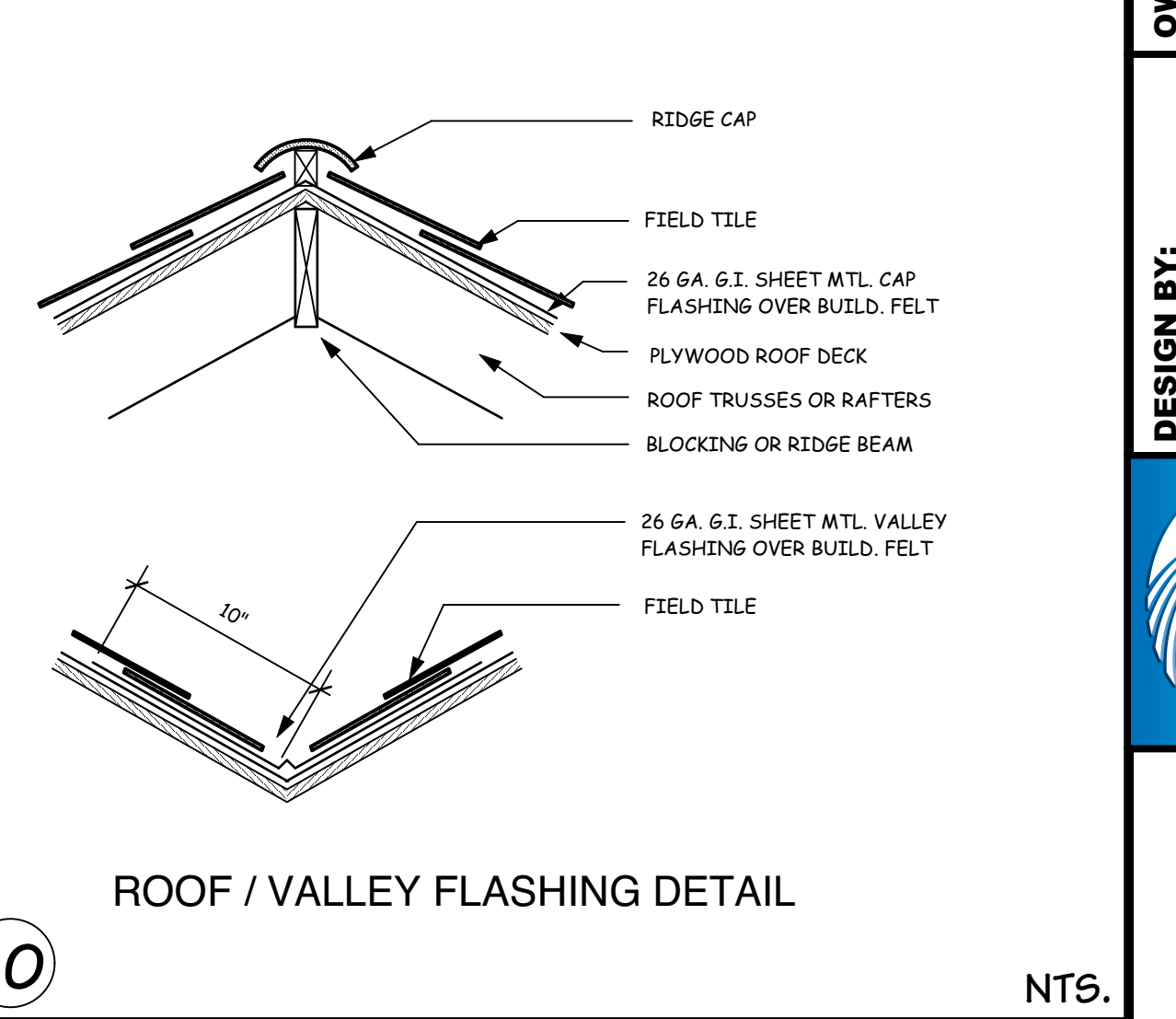
7 SHEAR TRANSFER AT ROOF NTS.



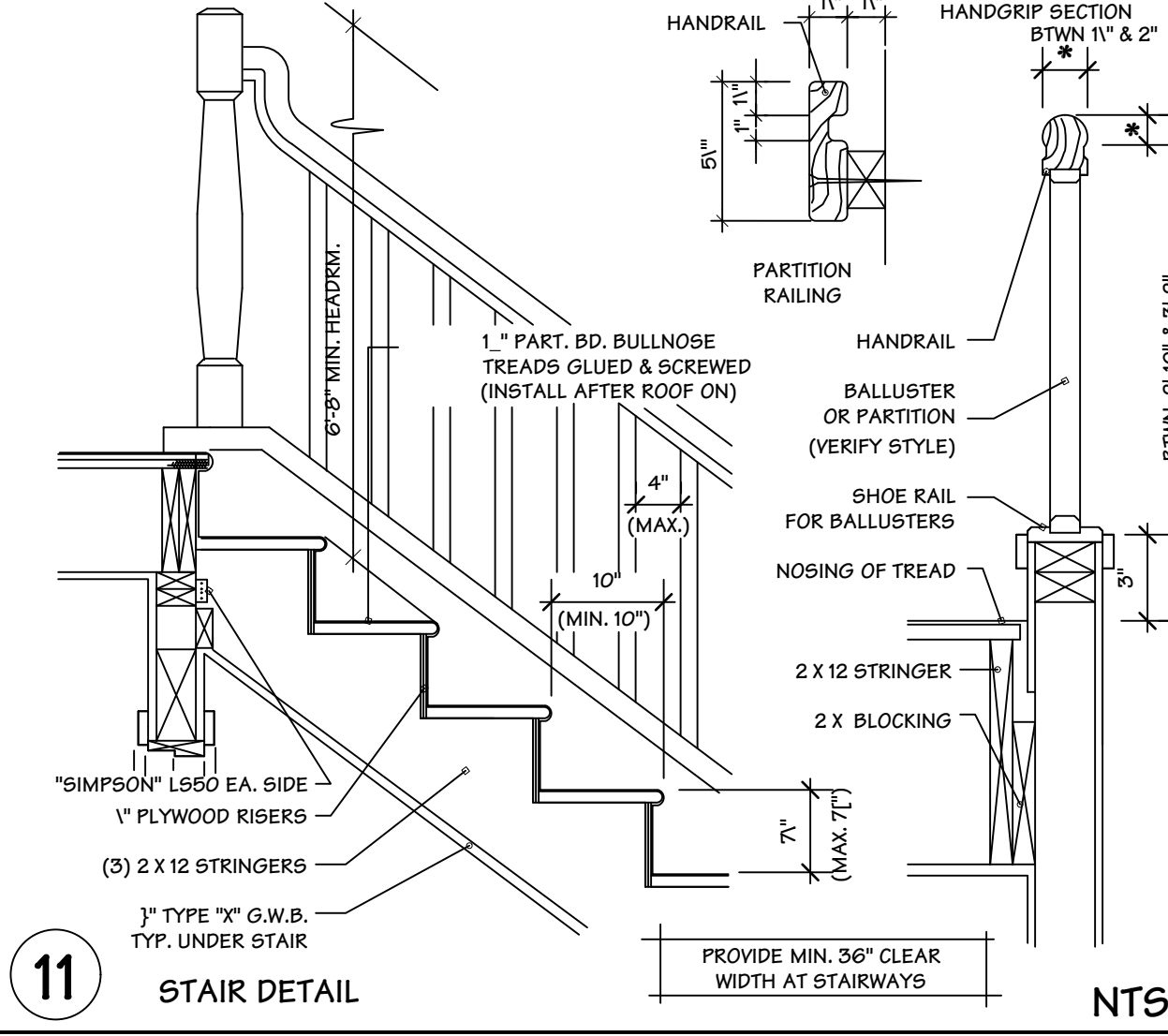
8 WATER PROOF WRAP AT WINDOWS NTS.



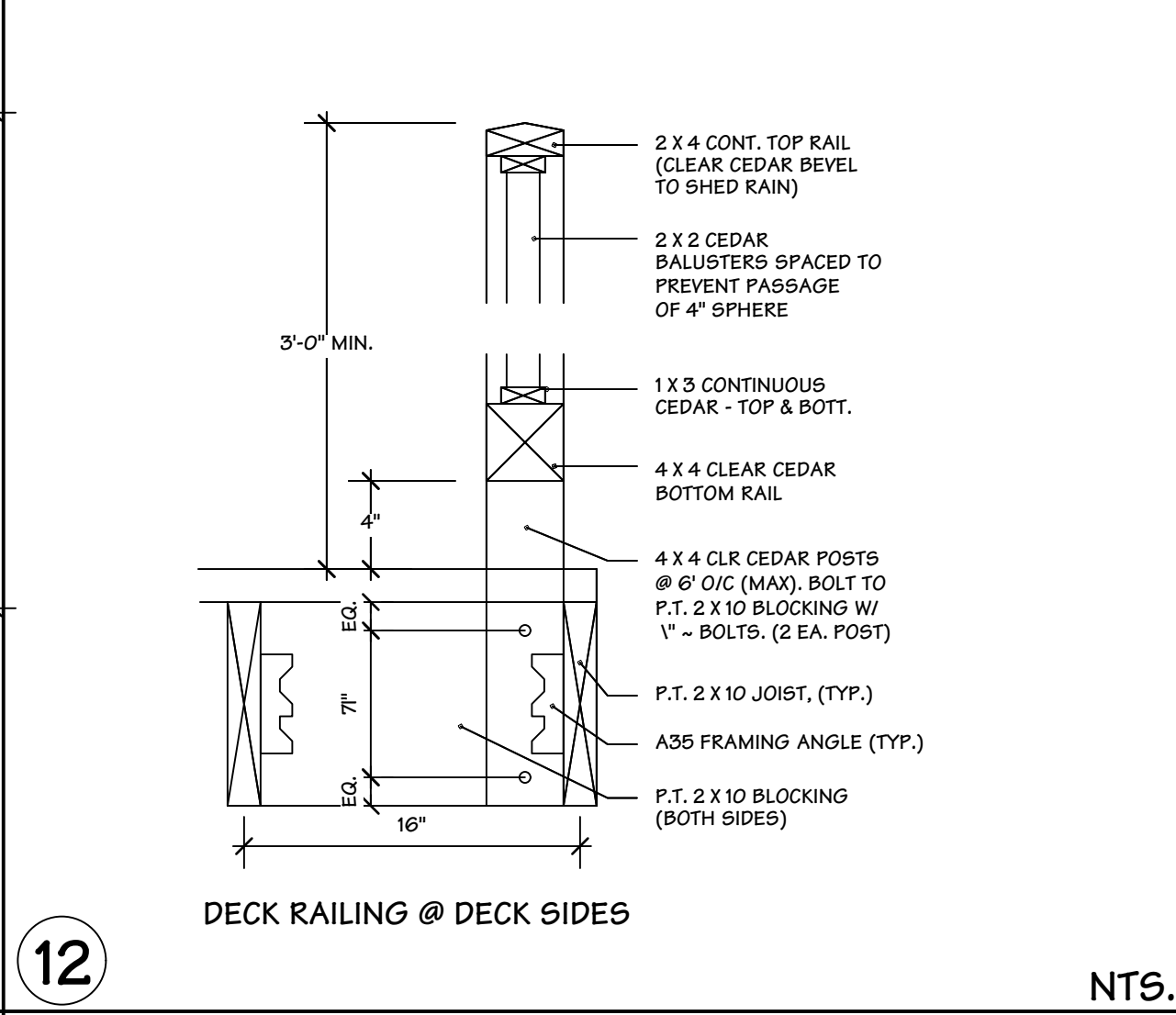
9 TYPICAL RIDGE BRACING NTS.



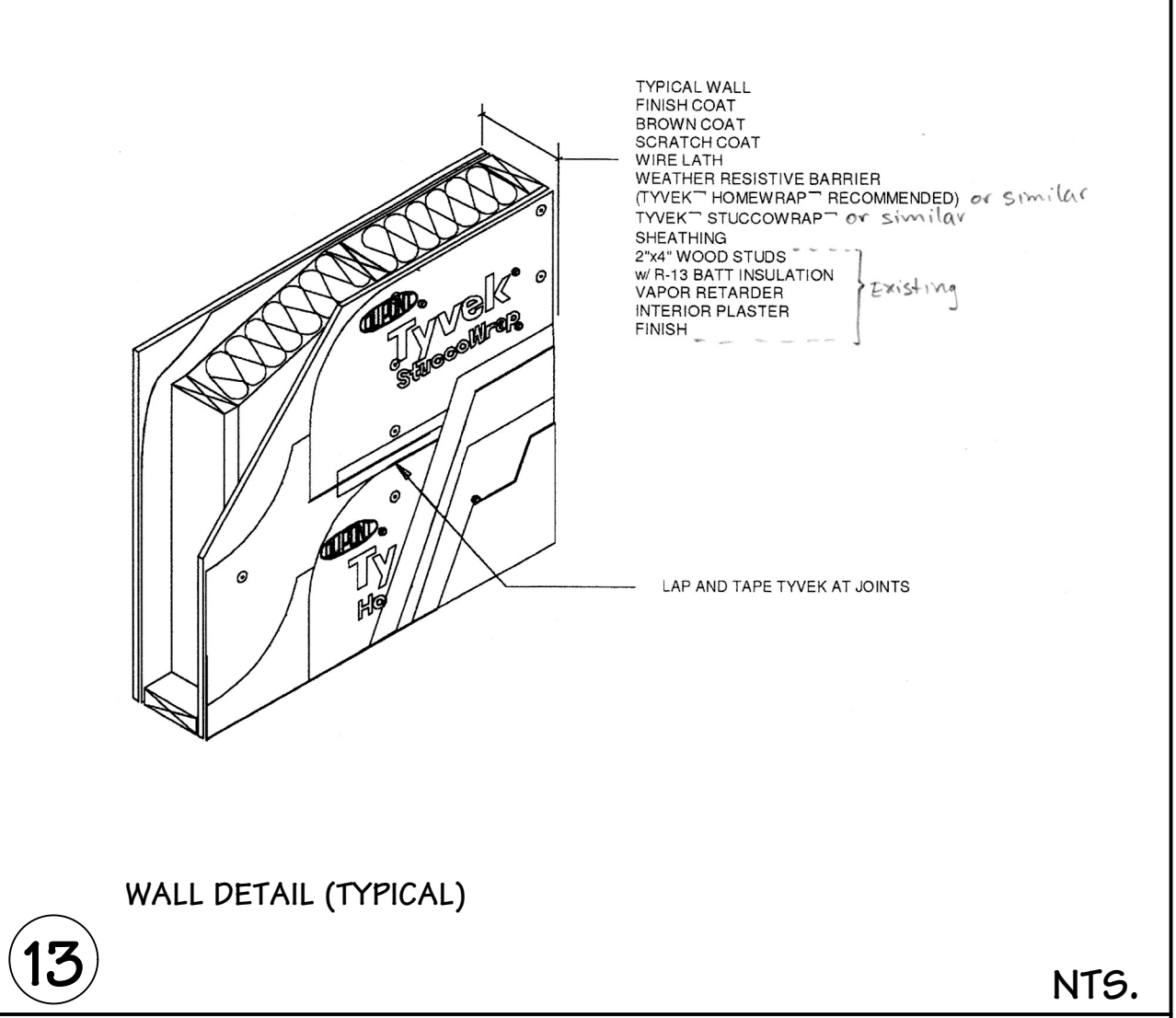
10 ROOF / VALLEY FLASHING DETAIL NTS.



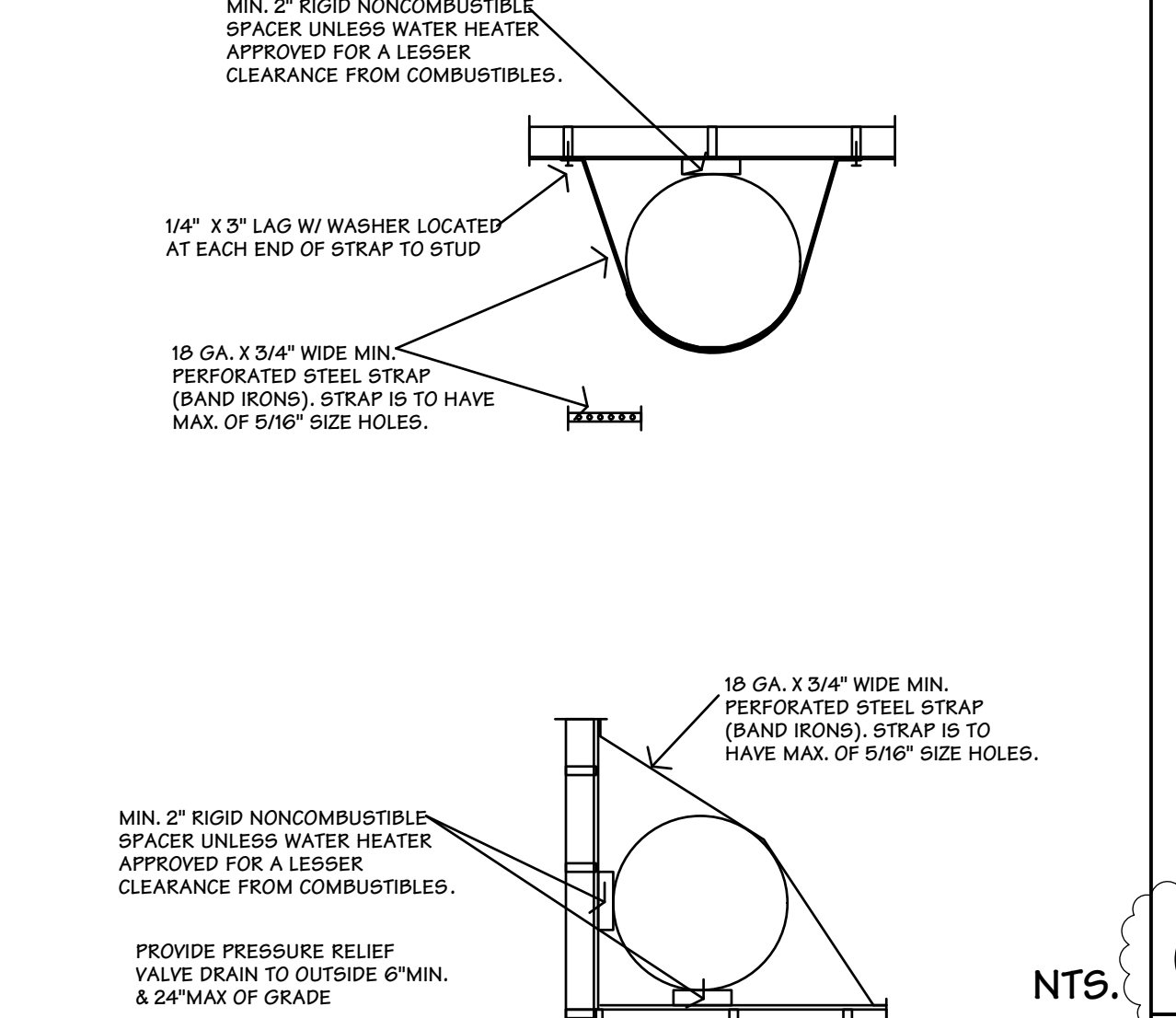
11 STAIR DETAIL NTS.



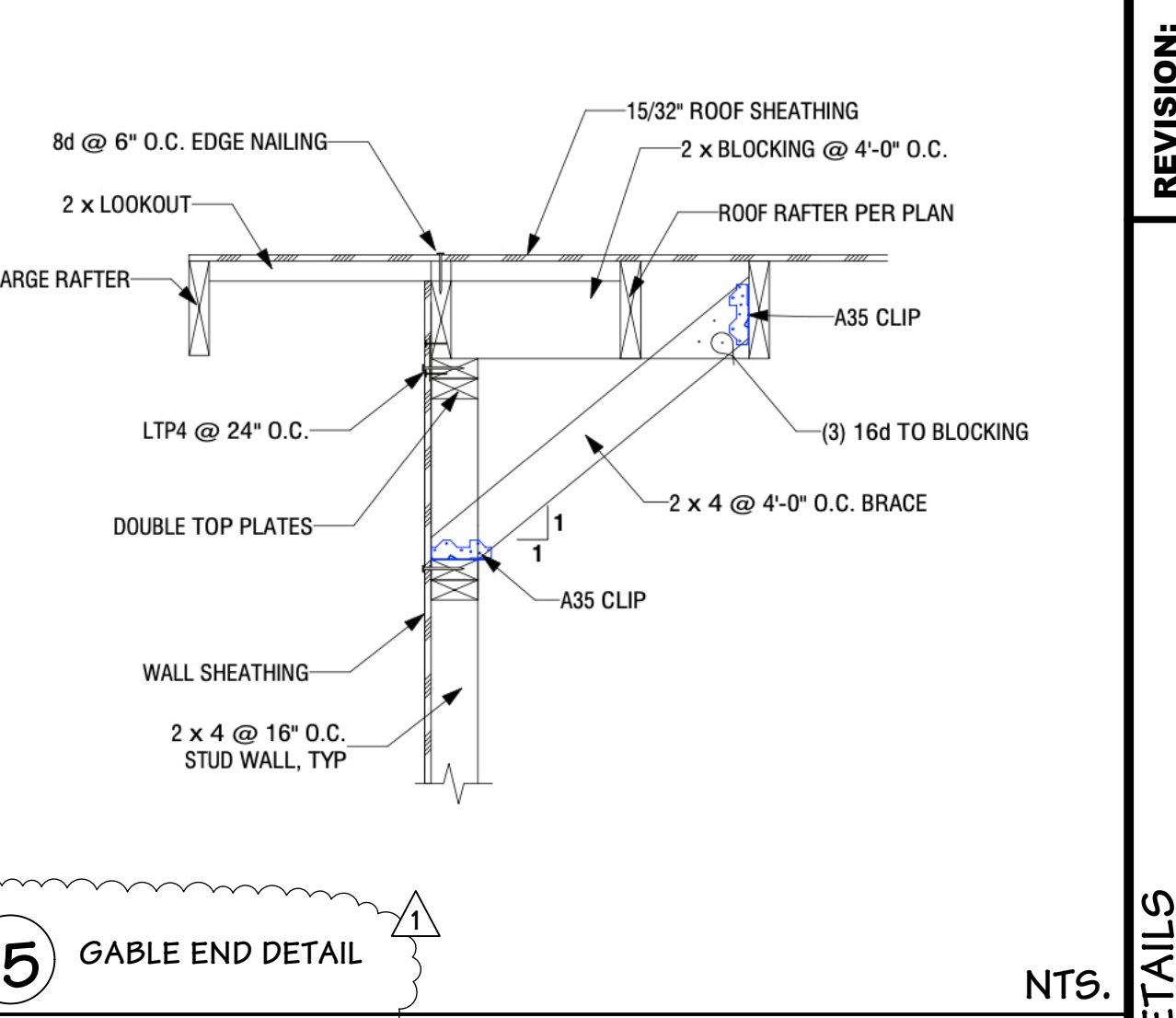
12 DECK RAILING @ DECK SIDES NTS.



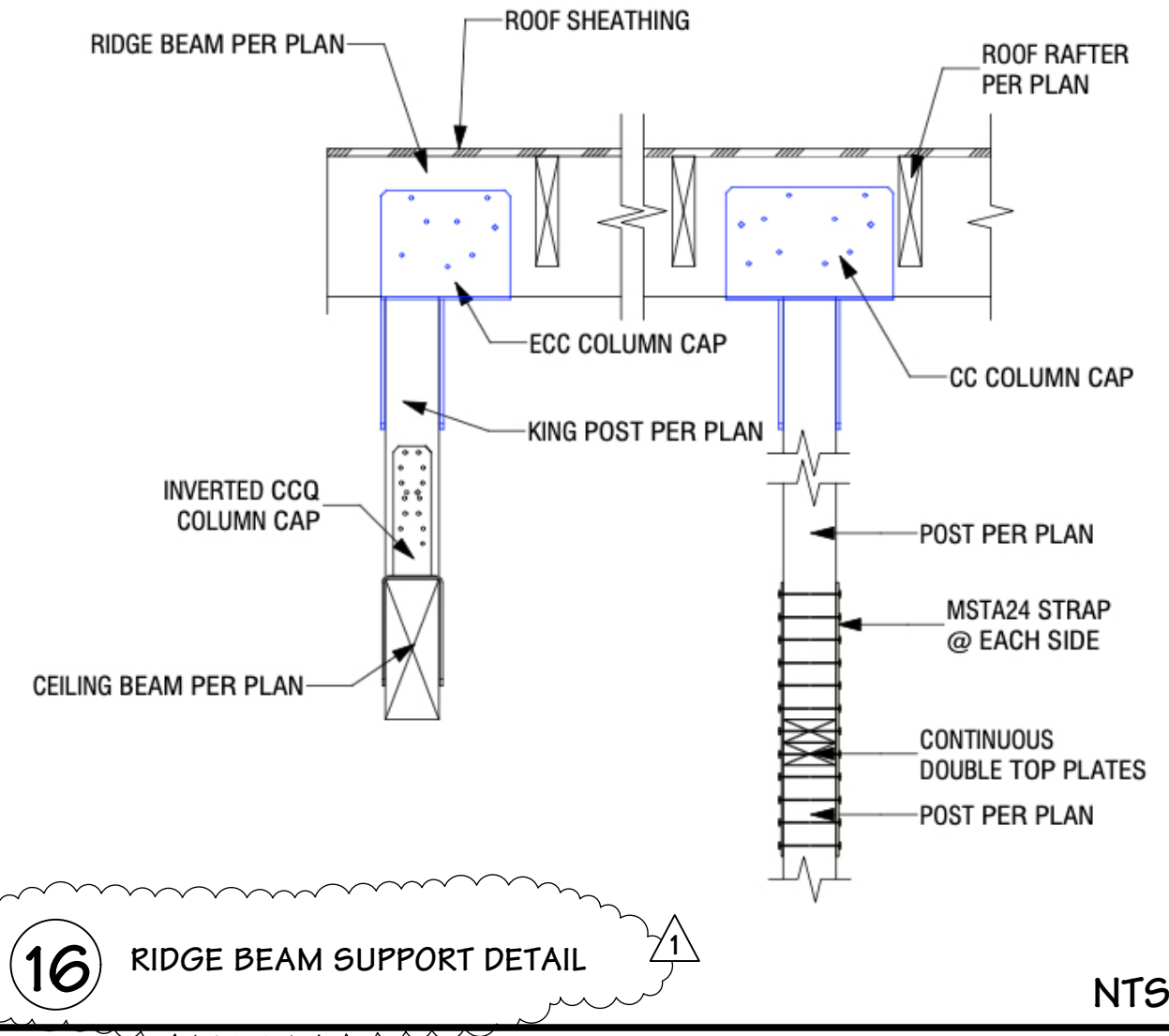
13 WALL DETAIL (TYPICAL) NTS.



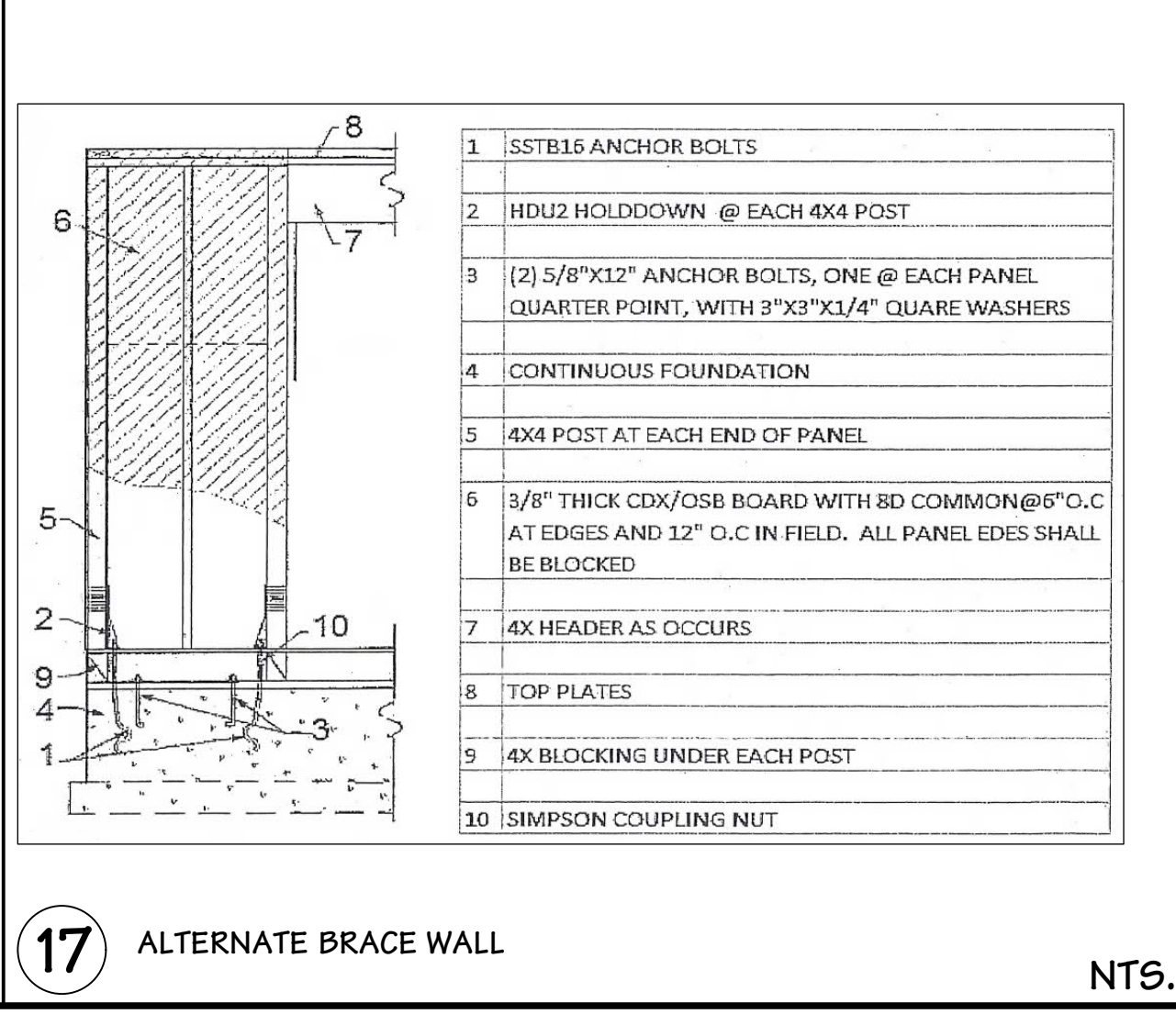
14 MIN. EARTHQUAKE ANCHORAGE FOR WATER HEATERS NTS.



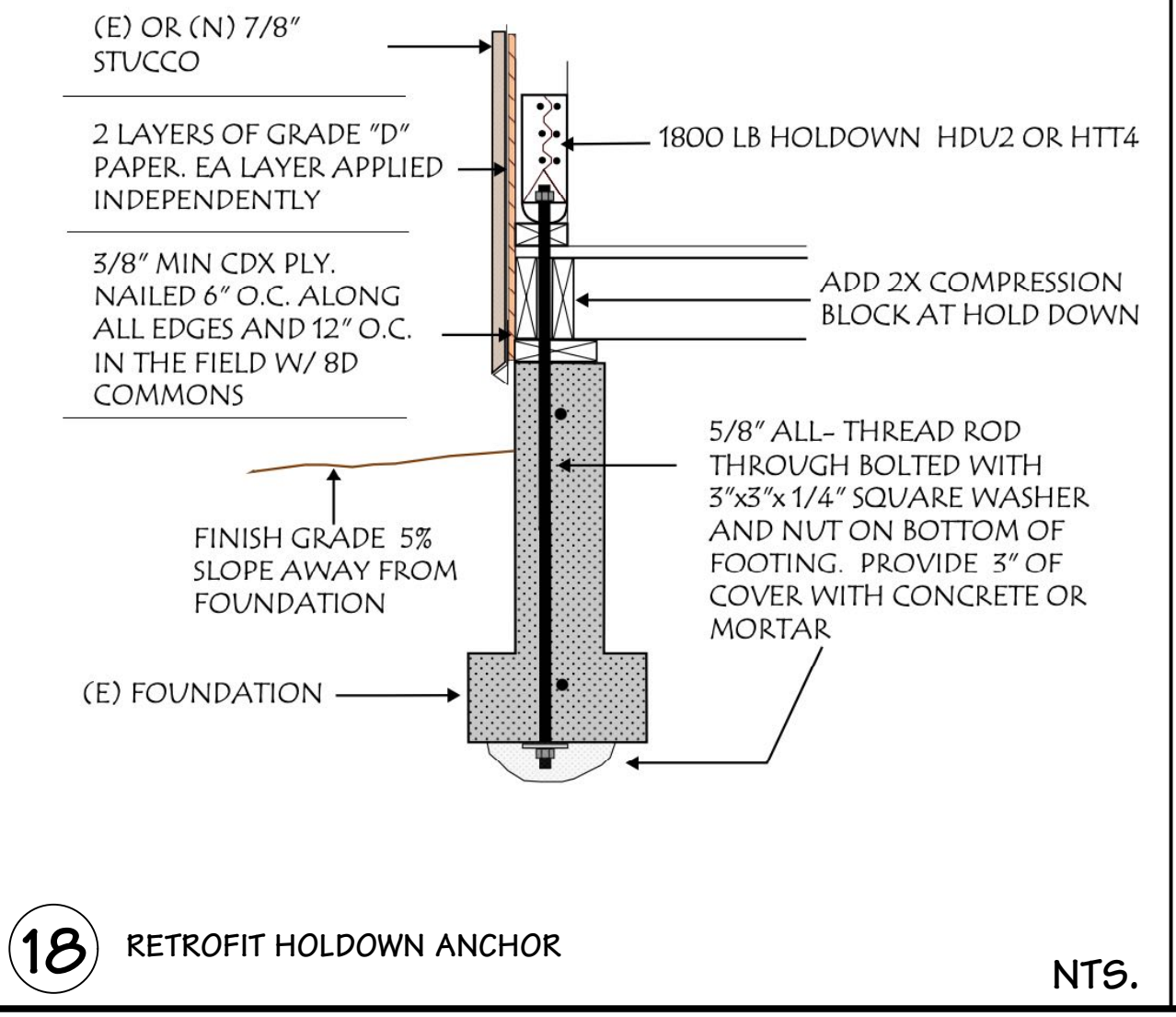
15 GABLE END DETAIL NTS.



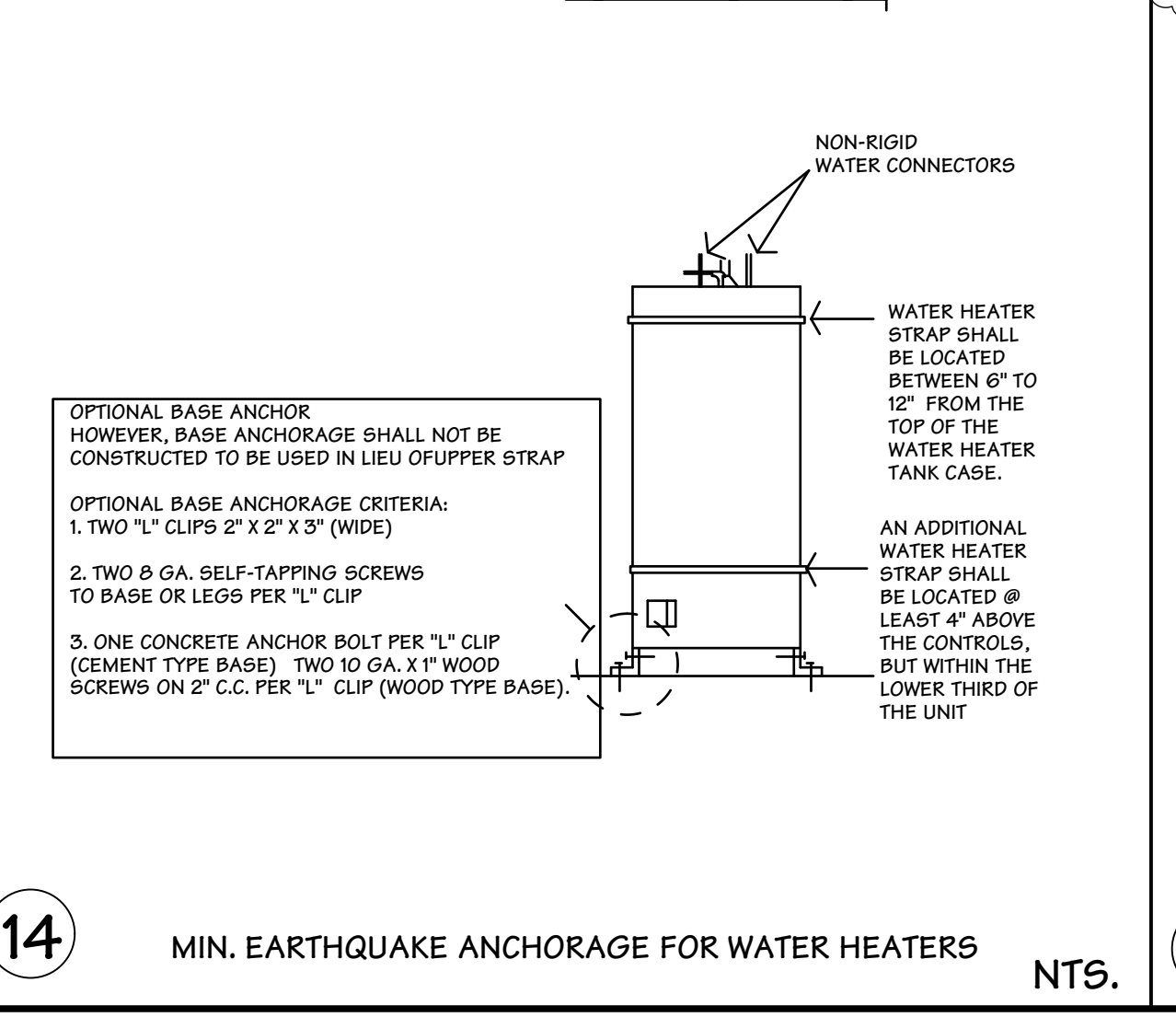
16 RIDGE BEAM SUPPORT DETAIL NTS.



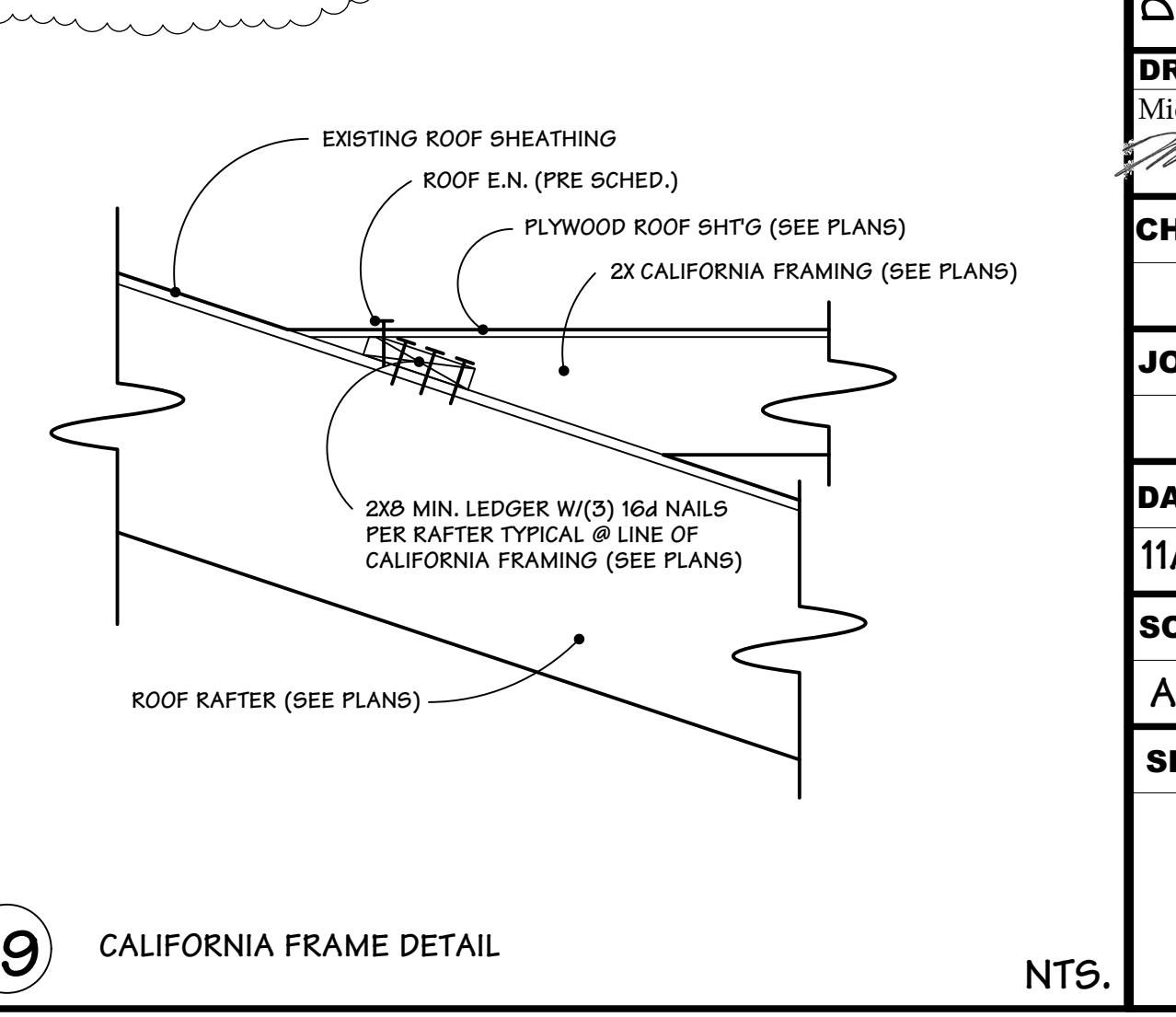
17 ALTERNATE BRACE WALL NTS.



18 RETROFIT HOLDOWN ANCHOR NTS.



19 CALIFORNIA FRAME DETAIL NTS.



20 CALIFORNIA FRAME DETAIL NTS.

OWNER: JOE SIMAS  
 2180 ALMADEN ROAD  
 SAN JOSE, CA. 95125

DESIGN BY:  
 PACIFIC BLUE DEVELOPMENTS  
 Michael S. Radu  
 5000 Central Expressway  
 Suite 200  
 San Jose, CA 95128  
 (408) 504-6626 Cell

REVISION:  
 PER CITY COMMENTS DATED 12/10/2020

DETAILS

DRAWN BY  
 Michael S. Radu

CHECKED BY  
 PBD

JOB NO.  
 18-23

DATE  
 11/23/2021

SCALE  
 AS SHOWN

SHEET  
 A-6